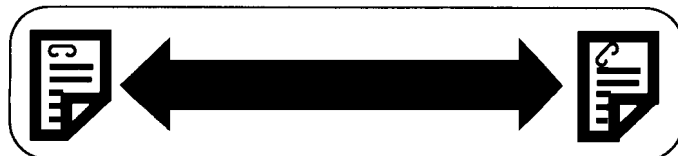


Model	Sorter Stapler (Matt20) for A7 / N440 / SP40	Volt/Hz	Date of Modification	Serial Number
Modified Article	Parts Catalog			
Reason for Modification	Parts catalog correction			

Please correct your parts catalog as follows:

1. Addition

P/N	Description	Q'ty	Index No.	Page
A4981831	Staple Position Decal - RICOH	1	17	5
A4981833	Staple Position Decal - SAVIN	1	17	5
A4981834	Staple Position Decal - INFOTEC	1	17	5
A4981835	Staple Position Decal - NRG	1	17	5



How to Set Originals When in Staple Mode

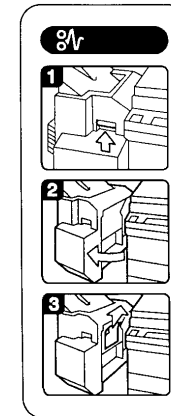
Set originals face up in a DF. The arrow indicates the position where the copies will be stapled.

Stapled copies Position of originals in DF

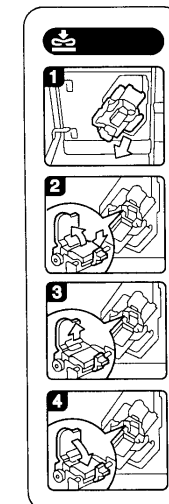
Note • A 5 1/2" x 8 1/2" or smaller size copies cannot be stapled
 • From 2 to 30 sheets can be stapled

DETAILS OF MODIFICATION

P/N	Description	Q'ty	Index No.	Page
A3741861	Decal - Misfeed Removal - RICOH	1	18	5
A3741862	Decal - Misfeed Removal - SAVIN	1	18	5
A3741863	Decal - Misfeed Removal - NRG	1	18	5
A3741864	Decal - Misfeed Removal - INFOTEC	1	18	5



P/N	Description	Q'ty	Index No.	Page
A3741871	Decal - Staple Misfeed - RICOH	1	19	5
A3741872	Decal - Staple Misfeed - SAVIN	1	19	5
A3741873	Decal - Staple Misfeed - NRG	1	19	5
A3741874	Decal - Staple Misfeed - INFOTEC	1	19	5

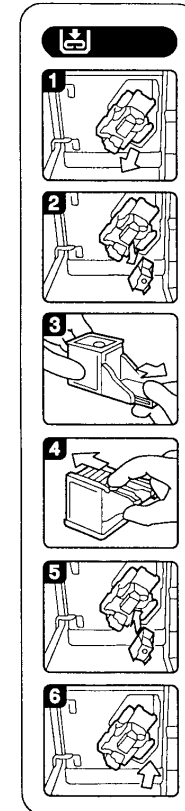
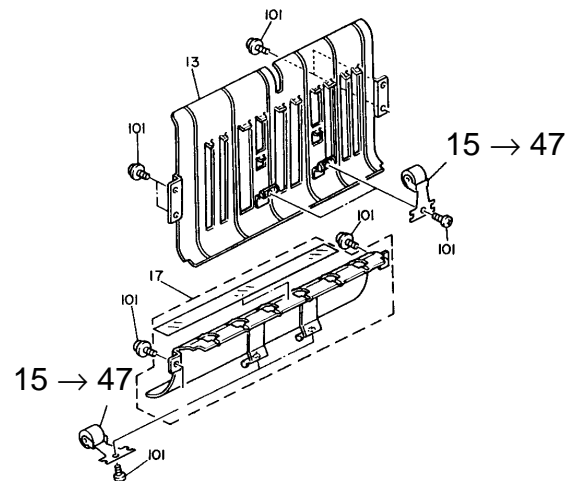


DETAILS OF MODIFICATION

P/N	Description	Q'ty	Index No.	Page
A3741881	Decal - Add Staple - RICOH	1	20	5
A3741882	Decal - Add Staple - SAVIN	1	20	5
A3741883	Decal - Add Staple - NRG	1	20	5
A3741884	Decal - Add Staple - INFOTEC	1	20	5

2. Correction

	P/N	Description	Q'ty	Index No.	Page
Incorrect	A3742163	Guide Roller	6	15	7
Correct	A3742163	Spring Plate - Lower Transport	2	15	7
	A3742140	Guide Roller	4	7	



T. Ito, Manager
Copier Technical Support

MODEL NAME	V/Hz	DESTINATION	CODE	SERIAL NUMBER
Savin Sorter Stapler 3	115/60	USA, Canada	A374-15	
Ricoh ST24	115/60 220, 240/50	Whole World	A374-17	
NRG SR3227	115/60 220, 240/50	Whole World	A374-25	
Infotec SS203	220, 240/50	Europe	A374-26	

Model	Sorter Stapler (Matt20) for A7 / N440 / SP40 (SAVIN Only)	Volt/Hz	Date of Modification	Serial Number
Modified Article	Parts Catalog			
Reason for Modification	Parts catalog correction			

Please correct your parts catalog as follows:

Incorrect P/N	Correct P/N	Description	Q'ty Used	Parts Catalog	
				Index No.	Page
A3721562	A3741562	Upper Cover (SVN)	1	4	5

T. Ito, Manager
 Copier Technical Support

MODEL NAME	V/Hz	DESTINATION	CODE	SERIAL NUMBER
Savin Sorter Stapler 3	115/60	USA, Canada	A374-15	/
Ricoh ST24	115/60 220, 240/50	Whole World	A374-17	
NRG SR3227	115/60 220, 240/50	Whole World	A374-25	
Infotec SS203	220, 240/50	Europe	A374-26	

Model	Sorter Stapler for A7/N440 (Matt 20)	Volt/Hz	Date of Modification	Serial Number
Modified Article	Parts Catalog			
Reason for Modification	Parts catalog correction			

Please add the following part:

P/N	Description	Q'ty	Index No.	Page
A0481367	Decal - Switch (Ricoh)	1	22	5
A0486282	Decal - Switch (NRG)	1	22	5
A0486082	Decal - Switch (Infotec)	1	22	5



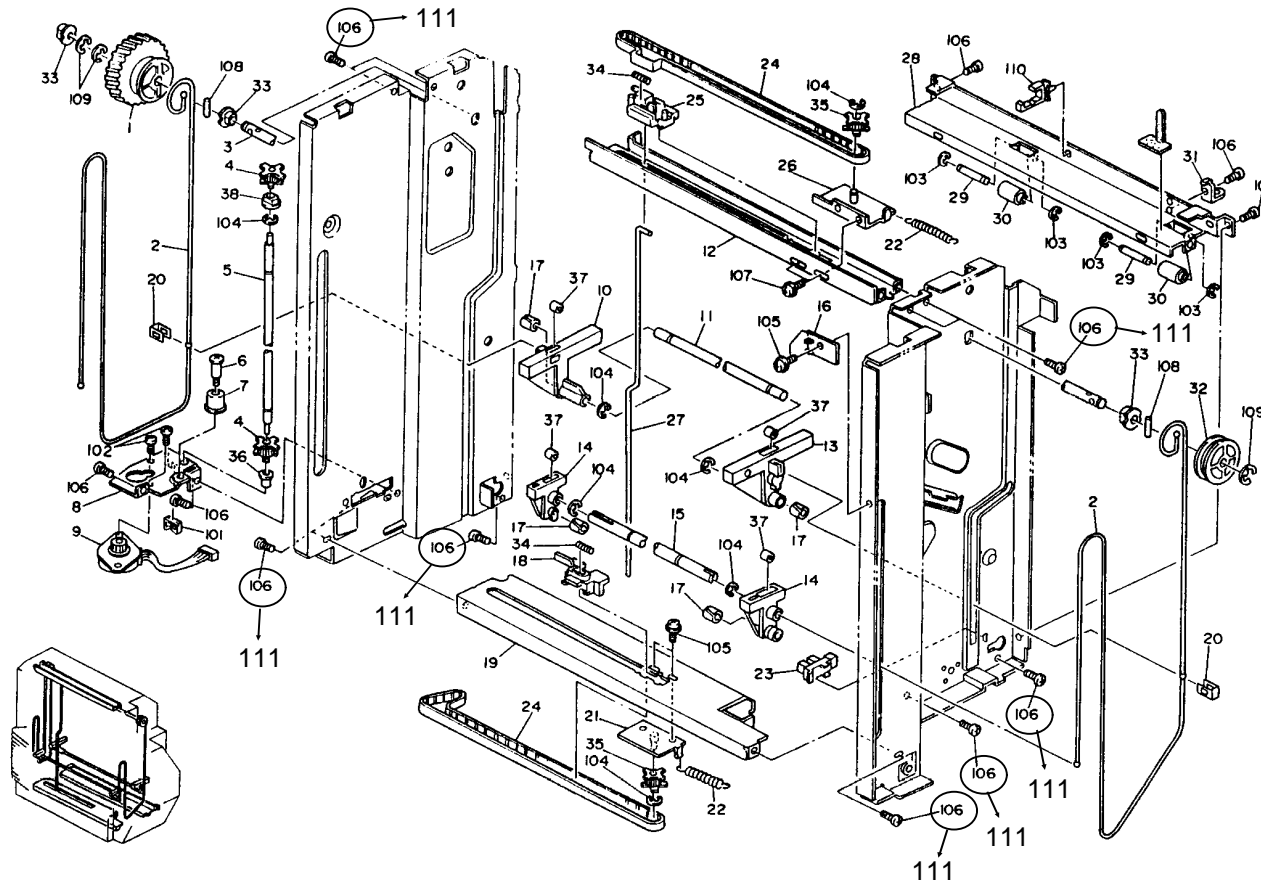
DETAILS OF MODIFICATION

Please add a new part number for screws and change the index numbers as follows:

P/N	Description	Q'ty	Index No.	Page
04340060B	Philips Tapping Screw - M4 x 6	n → n-10	106	13
09504006B	Screw - M4 x 6	n → n+10	* 111	13

* : New index number

5. FRAME SECTION (A374)



T. Ito, Manager
Copier Technical Support

MODEL NAME	V/Hz	DESTINATION	CODE	SERIAL NUMBER
Savin Sorter Stapler 3	115/60	USA, Canada	A374-15	/
Ricoh ST24	115/60 220, 240/50	Whole World	A374-17	
NRG SR3227	115/60 220, 240/50	Whole World	A374-25	
Infotec SS203	220, 240/50	Europe	A374-26	

Model	Sorter Stapler for A7/N440 (Matt 20)	Volt/Hz	Date of Modification	Serial Number
Modified Article	Entrance Guide Plates			
Reason for Modification	To reduce noise when the junction pawls touch the entrance guide plates.			

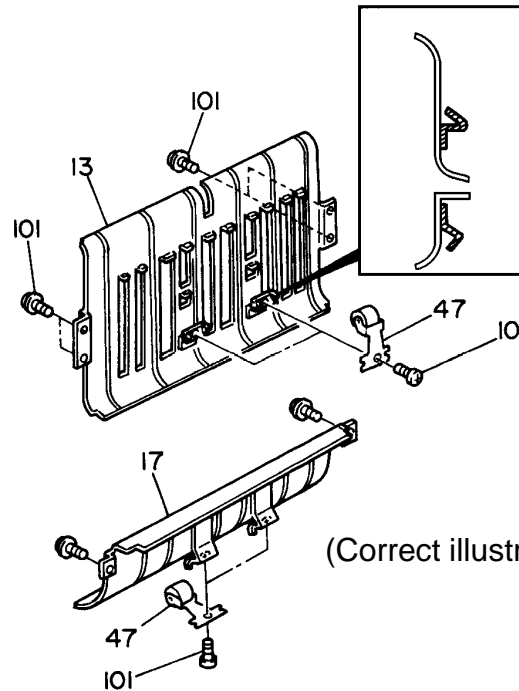
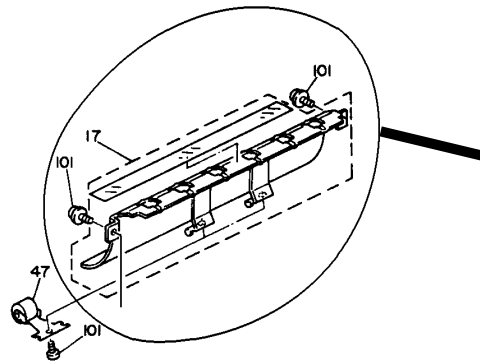
Draw No.	Old Parts No.	New Parts No.	Description	Rank	Q'ty Used Old→New	Inter-changeability	Parts needed for replacement by new part		Parts Catalog	
							Part No.	Description	No.	Page
		A3742126	Cushion Sheet		0 → 2				*48	7
		A3742134	Cushion		0 → 2				*49	7
								*: New index numbers		

Rank: A : Replace with new parts immediately. B : Replace with new parts at time of repair. C : Replace with new parts at time of overhaul.
 Interchangeability:
 (1) When old and new parts are not mutually interchangeable, use additional parts or an assembly part as indicated in "Parts needed for replacement by new part" to install the new part.
 (2) The mark to the left of the slash indicates whether the old part can be used in the new machine, and the mark to the right indicates whether the new part can be used in the old machine. x = Not interchangeable o = Interchangeable

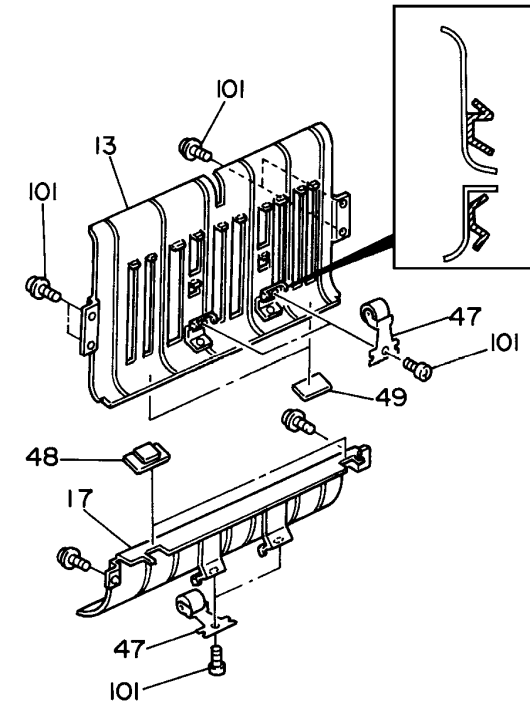
DETAILS OF MODIFICATION

2. TRANSPORT SECTION

Incorrect illustration



(Correct illustration)



Two pieces of the cushion sheet (#48) have been stuck on the entrance guide plate - lower (#17) and two pieces of the cushion (#49) have been stuck on the entrance guide plate - upper (#13).

These are to reduce noise when the junction pawls touch the entrance guide plates. The shape of the welded bracket for guide rollers (#47) on both the upper and lower entrance guide plates have also been changed as shown. This is to fix support guide plates when installing this sorter stapler on another copier in the future. The part numbers have not been changed.

T. Ito, Manager
Copier Technical Support

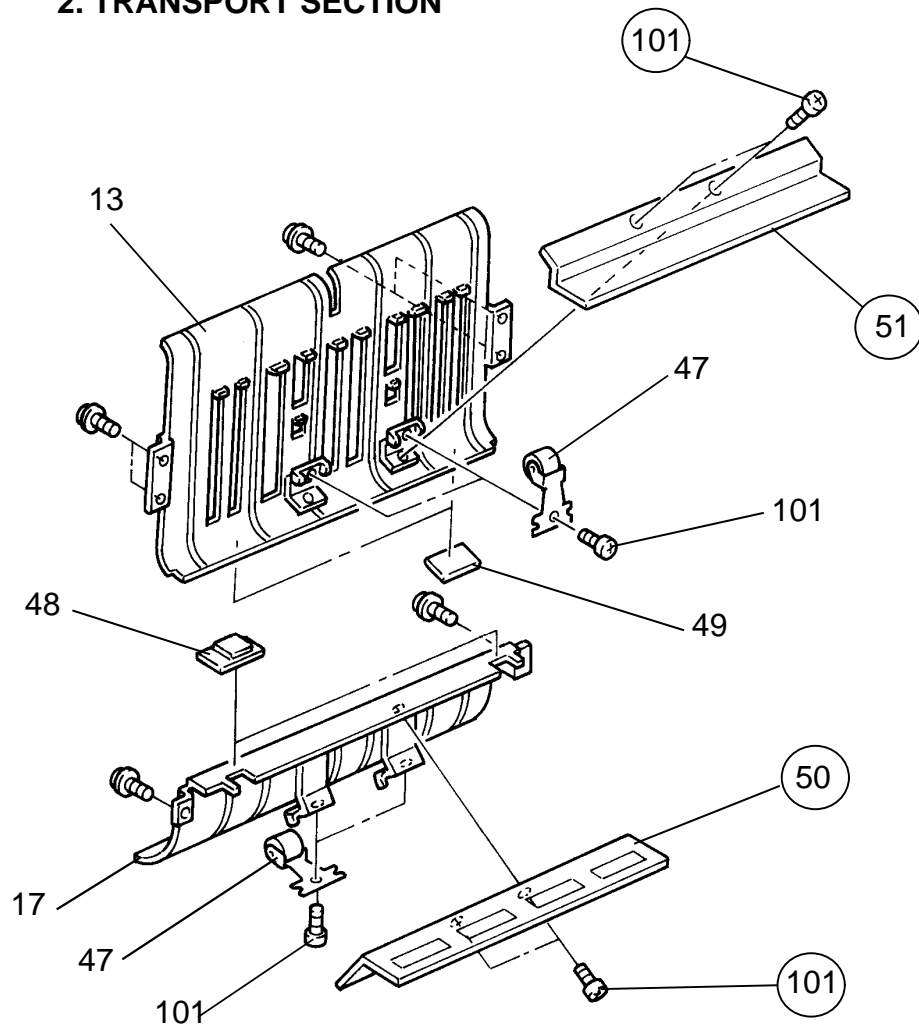
MODEL NAME	V/Hz	DESTINATION	CODE	SERIAL NUMBER
Savin Sorter Stapler 3	115/60	USA, Canada	A374-15	4063020001
Ricoh ST24	115/60 220, 240/50	Whole World	A374-17	A3203020001
NRG SR3227	115/60 220, 240/50	Whole World	A374-25	4863020001
Infotec SS203	220, 240/50	Europe	A374-26	3D30230001

Model		Sorter Stapler for A7 / N440 (Matt 20)					Volt/Hz	Date of Modification	Serial Number		
Modified Article		Upper and lower support guides									
Reason for Modification		To enable installing this sorter stapler on a new model, F400									
Draw No.	Old Parts No.	New Parts No.	Description	Rank	Q'ty Used Old→New	Inter-change-ability	Parts needed for replacement by new part			Parts Catalog	
							Part No.	Description	No.	Page	
		A3742260	Lower Support Guide		0 → 1				*50	7	
		A3742265	Upper Support Guide		0 → 1				*51	7	
		04340060B	Philips Tapping Screw - M4x6		n → n+4				101	7	
								*: New index numbers			

Rank: A : Replace with new parts immediately. B : Replace with new parts at time of repair. C : Replace with new parts at time of overhaul.
 Interchangeability:
 (1) When old and new parts are not mutually interchangeable, use additional parts or an assembly part as indicated in "Parts needed for replacement by new part" to install the new part.
 (2) The mark to the left of the slash indicates whether the old part can be used in the new machine, and the mark to the right indicates whether the new part can be used in the old machine. x = Not interchangeable o = Interchangeable

DETAILS OF MODIFICATION

2. TRANSPORT SECTION



To enable installing this sorter stapler on a new model, F400, Lower Support Guide (#50), Upper Support Guide (#51), and 4 pieces of Philips Tapping Screw - M4 x 6 have been enclosed in the machine box.

T. Ito, Manager
Copier Technical Support

MODEL NAME	V/Hz	DESTINATION	CODE	SERIAL NUMBER
Savin Sorter Stapler 3	115/60	USA, Canada	A374-15	4063030001
Ricoh ST24	115/60 220, 240/50	Whole World	A374-17	A3203030001
NRG SR3227	115/60 220, 240/50	Whole World	A374-25	4863030001
Infotec SS203	220, 240/50	Europe	A374-26	3D30330001

Model	Sorter Stapler for A7/N440 (Matt 20)	Volt/Hz	Date of Modification	Serial Number
Modified Article	Main Control Board			
Reason for Modification	To enable the operation of the Matt 20 with a new model.			

Old P/N	New P/N	Description	Q'ty Used	Inter-change-ability	Parts Catalog	
					Index No.	Page
A3745100	A3745105	Main Control Board	1 → 1	X/O	20	11

When the front door of the MATT20 or the MATT20 itself is opened or closed, a rush current will run into the interface cable between the main frame and the MATT20, lowering voltage of the logic circuit.

When the MATT20 is installed on a new model, F400, this will make the MATT20 malfunction.

To prevent this problem with the F400 a rush current prevention circuit will be added in the main control board.

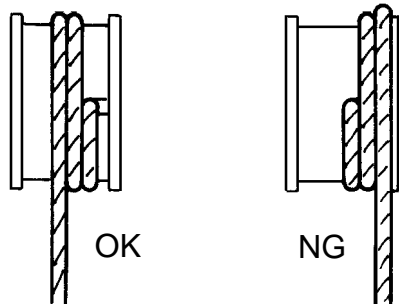
The software will also be modified to operate the MATT20 with the F400.

T. Ito, Manager
Copier Technical Support

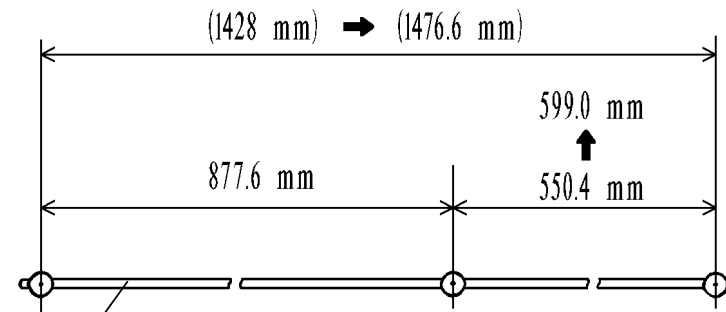
MODEL NAME	V/Hz	DESTINATION	CODE	SERIAL NUMBER
Savin Sorter Stapler 3	115/60	USA, Canada	A374-15	4063030001
Ricoh ST24	115/60 220, 240/50	Whole World	A374-17	A3203021093
NRG SR3227	115/60 220, 240/50	Whole World	A374-25	4863030001
Infotec SS203	220, 240/50	Europe	A374-26	3D30330001

Model	Sorter Stapler for A7/N440 (Matt 20)	Volt/Hz	Date of Modification	Serial Number
Modified Article	Bin Lift Wire			
Reason for Modification	To prevent the bin lift wire from loosening on the pulley during transportation.			

Old P/N	New P/N	Description	Q'ty Used	Inter-changeability	Parts Catalog	
					Index No.	Page
AA050076	AA050084	Bin Lift Wire	2 → 2	X/O	2	13



[Fig. 1]



[Fig. 2]

The bin lift wire may loosen on the wire pulley during machine transportation and the wire may be wound up wrongly as shown in the figure 1. This will change the bin stop positions, resulting in paper jams.

To prevent this problem, the bin lift wire (#2) has been lengthened as shown in the figure 2 to wind a half turn more on the pulley.

Refer to RTB No A7-017 and N440-008 for the new wire installation procedure.

T. Ito, Manager
Copier Technical Support

MODEL NAME	V/Hz	DESTINATION	CODE	SERIAL NUMBER
Savin Sorter Stapler 3	115/60	USA, Canada	A374-15	4063040001
Ricoh ST24	115/60 220, 240/50	Whole World	A374-17	A3203040001
NRG SR3227	115/60 220, 240/50	Whole World	A374-25	4863040021
Infotec SS203	220, 240/50	Europe	A374-26	3D30730001

Model	Sorter Stapler A7/N440/F400 (MATT20)	Volt/Hz	Date of Modification	Serial Number
Modified Article	Exterior Covers			
Reason for Modification	As per OEMs request			

Old P/N	New P/N	Description	Q'ty Used	Inter-change-ability	Parts Catalog	
					Index No.	Page
A3741544	A3741545	Rear Cover (INF)	1 → 1	X/X	1	5
A3741574	A3741575	Proof Tray (INF)	1 → 1	X/X	2	5
A3741564	A3741565	Upper Cover (INF)	1 → 1	X/X	4	5
A3741594	A3741595	Lower Harness Cover (INF)	1 → 1	X/X	9	5
A3741603	A3741604	Front Cover Ass'y (INF)	1 → 1	X/X	10	5
A3741534	A3741535	Front Cover Cap (INF)	1 → 1	X/X	12	5
A3741554	A3741555	Harness Cover (INF)	1 → 1	X/X	18	7
A0741703	A3741704	Operating Handle Ass'y (INF)	1 → 1	X/X	30	11

As per Infotec's request, the color of the exterior covers has been changed.

S. Hamano, Assistant General Manager
 Technical Support Department

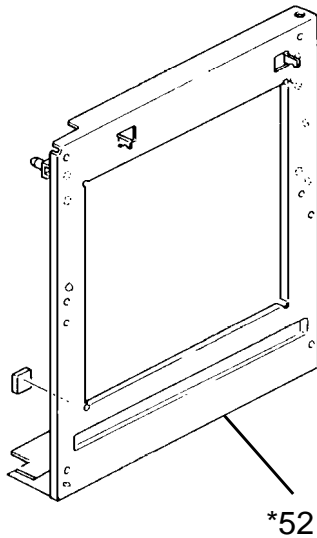
MODEL NAME	V/Hz	DESTINATION	CODE	SERIAL NUMBER
Savin Sorter Stapler 3	115/60	USA, Canada	A374-15	
Ricoh ST24	115/60 220, 240/50	Whole World	A374-17	
NRG SR3227	115/60 220, 240/50	Whole World	A374-25	
Infotec SS203	220, 240/50	Europe	A374-26	3D30730001

Model	Sorter Stapler for A7/N440/F400	Volt/Hz	Date of Modification	Serial Number
Modified Article	S/S Mounting Frame			
Reason for Modification	As per field request			

As per field request, the S/S mounting frame has been registered as a service part.

P/N	Description	Q'ty Used	Parts Catalog	
			Index No.	Page
A3741151	S/S Mounting Frame	1	* 52	7

* New Index No.



S. Hamano, Assistant General Manager
 Technical Support Department

MODEL NAME	V/Hz	DESTINATION	CODE	SERIAL NUMBER
Savin Sorter Stapler 3	115/60	USA, Canada	A374-15	
Ricoh ST24	115/60 220, 240/50	Whole World	A374-17	
NRG SR3227	115/60 220, 240/50	Whole World	A374-25	
Infotec SS203	220, 240/50	Europe	A374-26	

Model		Sorter Stapler for A7 / N440 / F400						Volt/Hz	Date of Modification	Serial Number	
Modified Article		Cushion - Jogger Holder									
Reason for Modification		To reduce noise									
Draw No.	Old Parts No.	New Parts No.	Description	Rank	Q'ty Used Old→New	Inter-changeability	Parts needed for replacement by new part		Parts Catalog		
							Part No.	Description	No.	Page	
		A3744182	Cushion - Jogger Holder		0 → 1				* 39	13	
								* New Index			

Rank: A : Replace with new parts immediately. B : Replace with new parts at time of repair. C : Replace with new parts at time of overhaul.

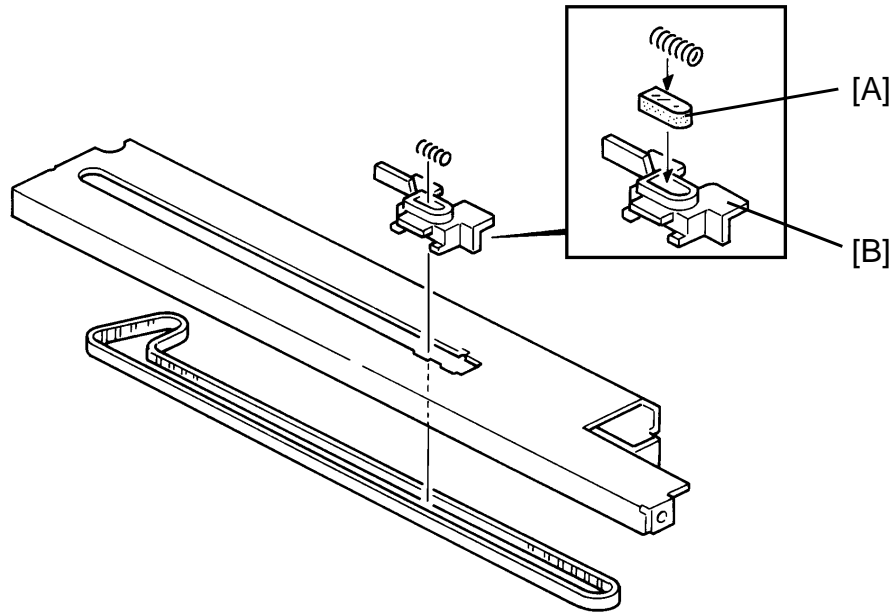
Interchangeability:

(1) When old and new parts are not mutually interchangeable, use additional parts or an assembly part as indicated in "Parts needed for replacement by new part" to install the new part.

(2) The mark to the left of the slash indicates whether the old part can be used in the new machine, and the mark to the right indicates whether the new part can be used in the old machine. x = Not interchangeable o = Interchangeable

DETAILS OF MODIFICATION

To reduce noise, the Jogger Holder Cushion [A] has been added to the Jogger Lower Holder (A3744181) [B].



S. Hamano, Assistant General Manager
Technical Support Department

MODEL NAME	V/Hz	DESTINATION	CODE	SERIAL NUMBER
Savin Sorter Stapler 3	115/60	USA, Canada	A374-15	4064060001
Ricoh ST24	115/60 220, 240/50	Whole World	A374-17	A3204040260
NRG SR3227	115/60 220, 240/50	Whole World	A374-25	4864050001
Infotec SS203	220, 240/50	Europe	A374-26	3D30540001

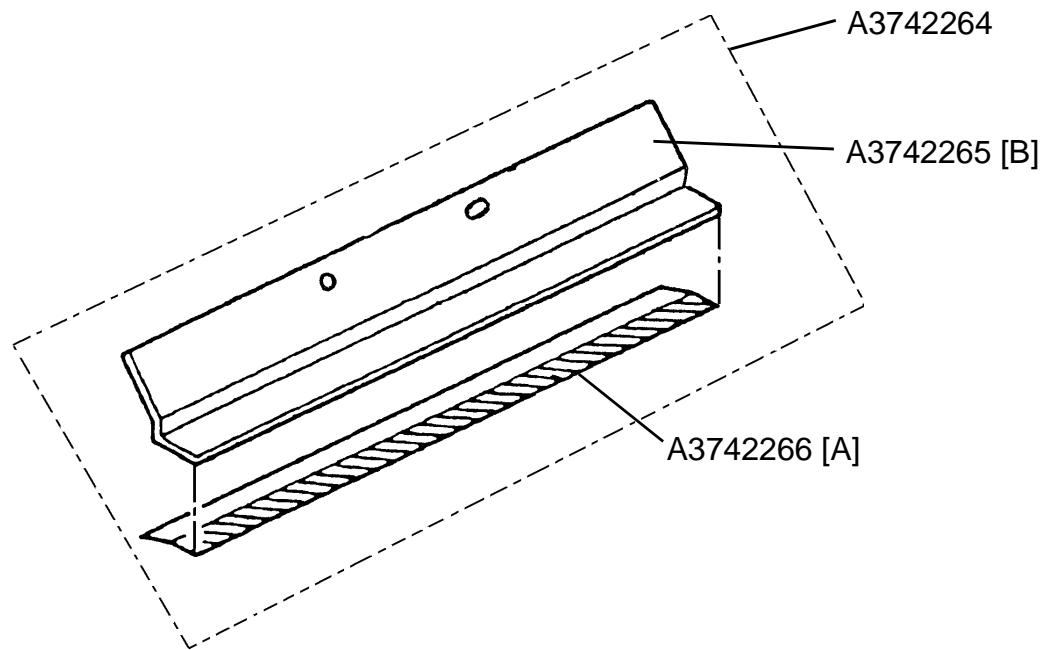
Model		Sorter Stapler for A7 / N440 / F400					Volt/Hz	Date of Modification	Serial Number	
Modified Article		Entrance Guide Plate								
Reason for Modification		To minimize paper jams at the entrance of the sorter stapler								
Draw No.	Old Parts No.	New Parts No.	Description	Rank	Q'ty Used Old→New	Inter-changeability	Parts needed for replacement by new part		Parts Catalog	
							Part No.	Description	No.	Page
	A3742265	A3742264	Upper Support Guide		1 → 1	X/O			51	7
		A3742266	Junction Pawl Guide Mylar		0 → 1				* 53	7
								* New Index		

Rank: A : Replace with new parts immediately. B : Replace with new parts at time of repair. C : Replace with new parts at time of overhaul.
 Interchangeability:
 (1) When old and new parts are not mutually interchangeable, use additional parts or an assembly part as indicated in "Parts needed for replacement by new part" to install the new part.
 (2) The mark to the left of the slash indicates whether the old part can be used in the new machine, and the mark to the right indicates whether the new part can be used in the old machine. x = Not interchangeable o = Interchangeable

DETAILS OF MODIFICATION

It was reported that in the combination of the F400 and Matt20, paper jam occurs at the exit of the copier main body if the paper is face curled.

To counter this, the Junction Pawl Guide Mylar [A] has been added to the Upper Support Guide [B].



S. Hamano, Assistant General Manager
Technical Support Department

MODEL NAME	V/Hz	DESTINATION	CODE	SERIAL NUMBER
Savin Sorter Stapler 3	115/60	USA, Canada	A374-15	4064020001
Ricoh ST24	115/60 220, 240/50	Whole World	A374-17	A3204020001
NRG SR3227	115/60 220, 240/50	Whole World	A374-25	4864020001
Infotec SS203	220, 240/50	Europe	A374-26	3D30240001

Model		Sorter Stapler for A7 / N440 / F400					Volt/Hz	Date of Modification	Serial Number	
Modified Article		Proof Tray								
Reason for Modification		To minimize proof tray exit jams								
Draw No.	Old Parts No.	New Parts No.	Description	Rank	Q'ty Used Old→New	Inter-changeability	Parts needed for replacement by new part		Parts Catalog	
							Part No.	Description	No.	Page
		07100050B	Hexagon Nut - M5						* 108	5
	04340084B		Tapping Screw - M4 x 8		n → n-2				107	5
		03440080F	Philips Truss Head Screw - M4 x 8		0 → 2				* 109	5
		A3742147	Exit Roller Guide		0 → 2				* 23	5
								* New Index		

Rank: A : Replace with new parts immediately. B : Replace with new parts at time of repair. C : Replace with new parts at time of overhaul.

Interchangeability:

(1) When old and new parts are not mutually interchangeable, use additional parts or an assembly part as indicated in "Parts needed for replacement by new part" to install the new part.

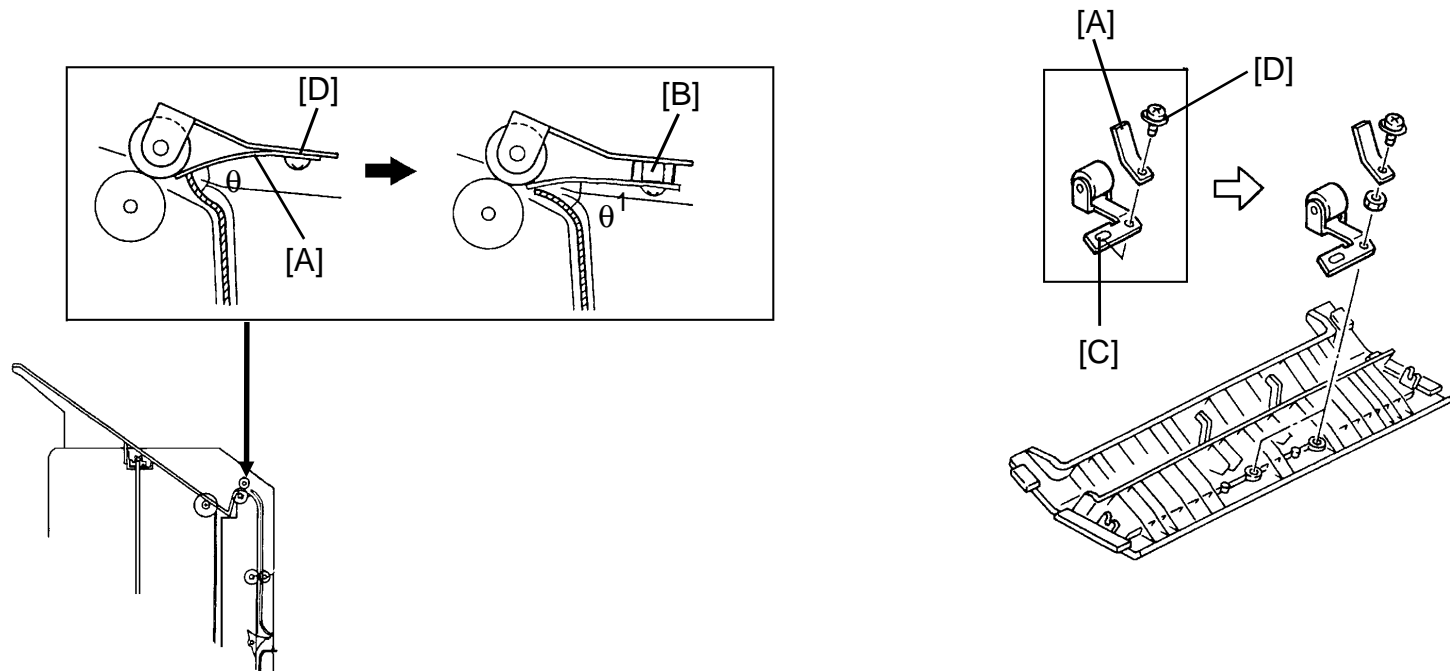
(2) The mark to the left of the slash indicates whether the old part can be used in the new machine, and the mark to the right indicates whether the new part can be used in the old machine. x = Not interchangeable o = Interchangeable

DETAILS OF MODIFICATION

It was reported that when face curled thick paper is used in the proof tray mode, the paper leading edge hits the exit roller guide [A] and a paper jam occurs.

To counter this, a hexagonal nut [B] has been inserted between the plate spring [C] and the exit roller guide, so that the angle θ between the guide and the paper has been reduced. Due to this modification, the length of the screw [D] holding the plate spring has been changed.

The exit roller guide [A] is not listed in the parts catalog, but this part was used from the 1st mass-production.



S. Hamano, Assistant General Manager
 Technical Support Department

MODEL NAME	V/Hz	DESTINATION	CODE	SERIAL NUMBER
Savin Sorter Stapler 3	115/60	USA, Canada	A374-15	4064060001
Ricoh ST24	115/60 220, 240/50	Whole World	A374-17	A3204030001
NRG SR3227	115/60 220, 240/50	Whole World	A374-25	4864030001
Infotec SS203	220, 240/50	Europe	A374-26	3D30340001

Model	Sorter Stapler for A7 / N440 / F400 / SP40	Volt/Hz	Date of Modification	Serial Number
Modified Article	Main Control Board			
Reason for Modification	To increase the torque margin of the main motor			

Draw No.	Old Parts No.	New Parts No.	Description	Rank	Q'ty Used Old→New	Inter-changeability	Parts needed for replacement by new part		Parts Catalog	
							Part No.	Description	No.	Page
	A3745105	A3745115	Main Control Board		1 → 1	X/O			20	11
	A3745108	A3745113	IC - AM27C256 - 205DC		1 → 1	X/O			21	11
	AA043202		Timing Belt - 145 x L		1 → 0	X/	X/O as a set		9	11
		AA043450	Timing Belt - 100 x L		0 → 1	/X			9	11
	AB030386		Pulley - 40Z		1 → 0	X/			7	11
		AB030497	Pulley - 16Z		0 → 1	/X			7	11
	A3742216	A5542216	Encoder		1 → 1	X/X			8	11
	AB030387		Pulley - 34Z		0 → 1	X/			10	7
		AB030498	Timing Pulley - 27Z		1 → 0	/X			10	7

Rank: A : Replace with new parts immediately. B : Replace with new parts at time of repair. C : Replace with new parts at time of overhaul.

Interchangeability:

- (1) When old and new parts are not mutually interchangeable, use additional parts or an assembly part as indicated in "Parts needed for replacement by new part" to install the new part.
- (2) The mark to the left of the slash indicates whether the old part can be used in the new machine, and the mark to the right indicates whether the new part can be used in the old machine. x = Not interchangeable o = Interchangeable

DETAILS OF MODIFICATION

To increase the torque margin of the main motor, the ROM (software) and the two resistors on the main control board have been changed.

1. ROM (Software)

The paper transportation speed at the sorter entrance has been reduced to lessen the mechanical load applied to the main drive motor.

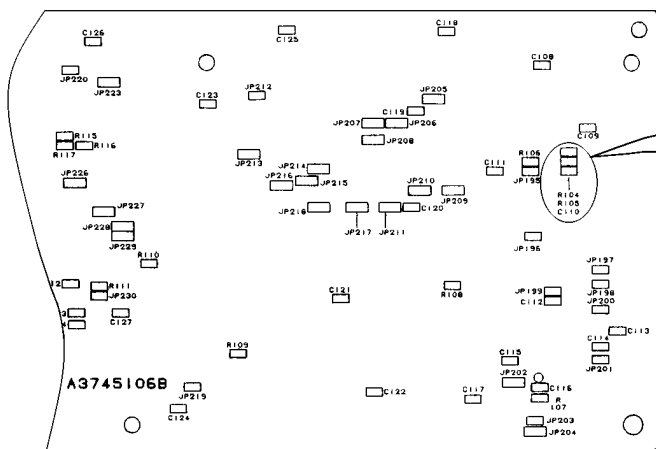
2. Main motor's torque up (810 gf cm → 940 gf cm)

The resistors have been changed to increase the motor drive current from 1.2A to 1.5A as follows.

R104 2.4KΩ → 1.5KΩ (P/N 16331501)

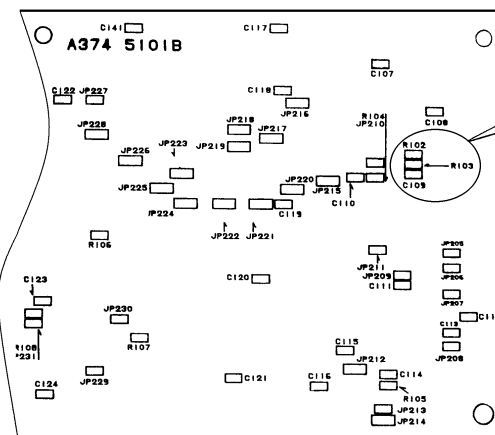
R105 470Ω → 620Ω (P/N 16336200)

Note : When modify the old main control board, R104 (R102), R105 (R103) and ROM should be changed together.



□ R104
 □ R105
 □ R110

A3745105



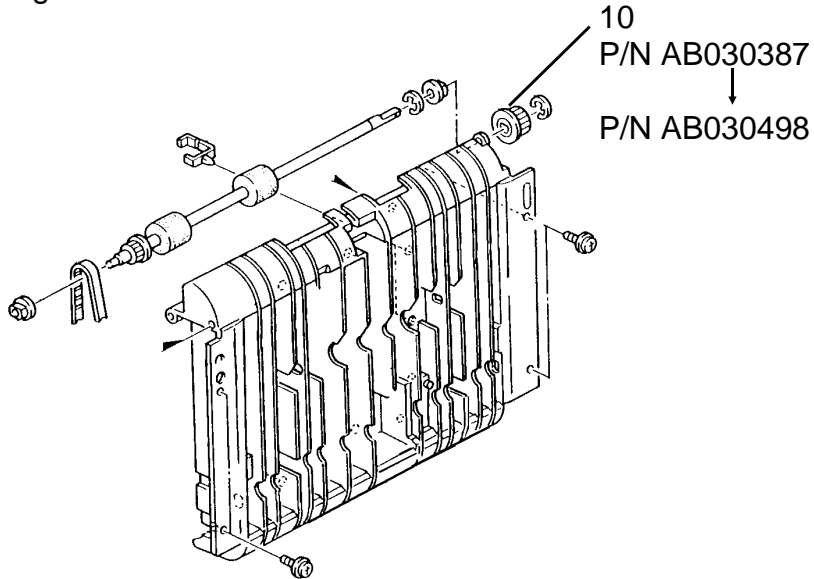
□ R102
 □ R103
 □ R109

A3745100

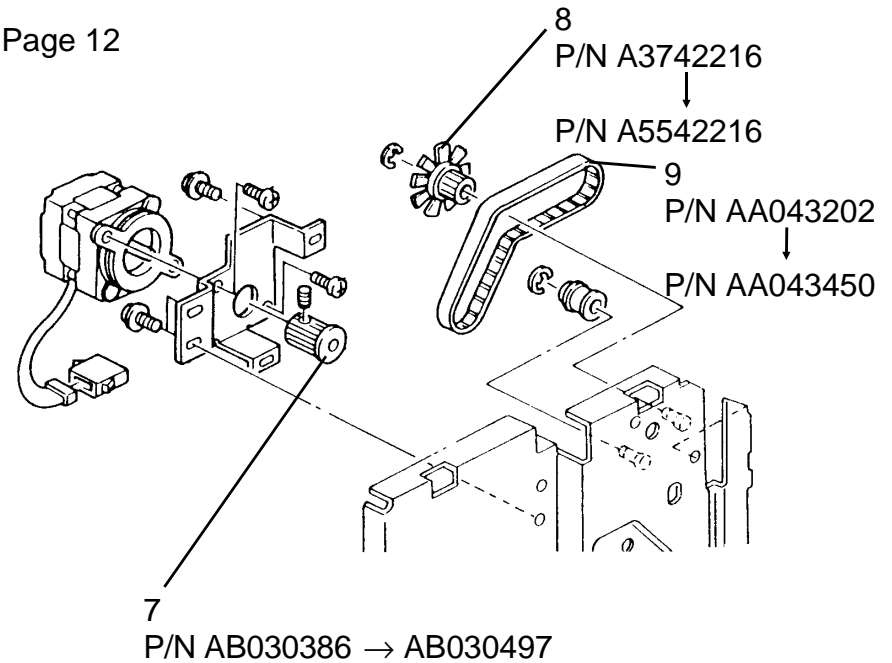
DETAILS OF MODIFICATION

3. Main drive pulleys and timing belt.
Additionally, to reduce the mechanical load on the main drive motor, the tooth shape of the following parts have been changed from S2M to S3M.

Page 8



Page 12



S. Hamano, Assistant General Manager
Technical Support Department

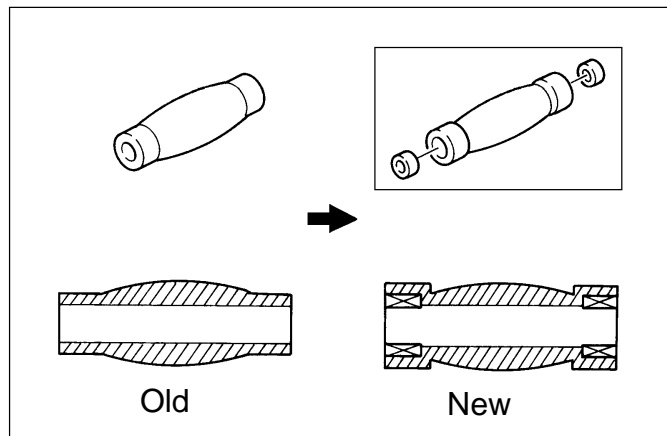
MODEL NAME	V/Hz	DESTINATION	CODE	SERIAL NUMBER
Savin Sorter Stapler 3	115/60	USA, Canada	A374-15	4064070001
Ricoh ST24	115/60 220, 240/50	Whole World	A374-17	A3204070001
NRG SR3227	115/60 220, 240/50	Whole World	A374-25	4864070001
Infotec SS203	220, 240/50	Europe	A374-26	3D3740001

Model	Sorter Stapler for A7 / N440 / F400 / SP40	Volt/Hz	Date of Modification	Serial Number
Modified Article	Exit Roller			
Reason for Modification	To reduce the mechanical load applied to the main drive motor			

Old P/N	New P/N	Description	Q'ty Used	Inter-change-ability	Parts Catalog	
					Index No.	Page
A3742546	A3742541	Exit Roller	2 → 2	X/O	28	7

To reduce the mechanical load applied to the main drive motor, the exit roller has been changed to a new type one which has two bushings containing lubricant.

Exit Roller



S. Hamano, Assistant General Manager
 Technical Support Department

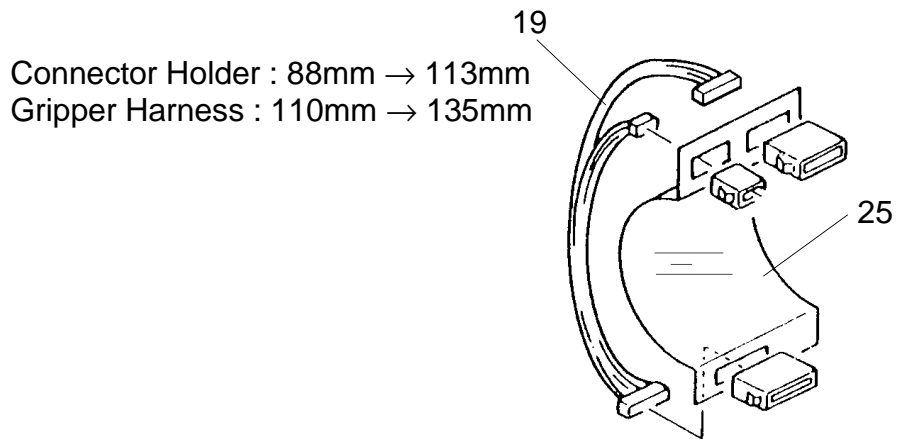
MODEL NAME	V/Hz	DESTINATION	CODE	SERIAL NUMBER
Savin Sorter Stapler 3	115/60	USA, Canada	A374-15	4064070001
Ricoh ST24	115/60 220, 240/50	Whole World	A374-17	A3204070001
NRG SR3227	115/60 220, 240/50	Whole World	A374-25	4864070001
Infotec SS203	220, 240/50	Europe	A374-26	3D30740001

Model	Sorter Staplar for A7 / N440 / F400 / SP40	Volt/Hz	Date of Modification	Serial Number
Modified Article	Connector Holder / Gripper Harness			
Reason for Modification	To facilitate manufacturing			

Old P/N	New P/N	Description	Q'ty Used	Inter-change-ability	Parts Catalog	
					Index No.	Page
A3744686	A3744684	Connector Holder	1 → 1	X/X	25	9
A3745210	A3745215	Gripper Harness	1 → 1	X/X	19	9

as a set O/O

To facilitate manufacturing, the connector holder and the gripper harness have been extended as follows:



S. Hamano, Assistant General Manager
 Technical Support Department

MODEL NAME	V/Hz	DESTINATION	CODE	SERIAL NUMBER
Savin Sorter Stapler 3	115/60	USA, Canada	A374-15	4063110001
Ricoh ST24	115/60 220, 240/50	Whole World	A374-17	A3203110063
NRG SR3227	115/60 220, 240/50	Whole World	A374-25	4863110001
Infotec SS203	220, 240/50	Europe	A374-26	3D31130001

Model		Sorter Stapler for A7 / N440 / F400 / SP40					Volt/Hz	Date of Modification	Serial Number	
Modified Article		Parts Catalog								
Reason for Modification		Parts catalog correction								
Draw No.	Old Parts No.	New Parts No.	Description	Rank	Q'ty Used Old→New	Inter-changeability	Parts needed for replacement by new part		Parts Catalog	
							Part No.	Description	No.	Page
	A3743505	A3743505	Bin Ass'y		20 → 19		RICOH		18	15
		A3743507	Lower Bin Ass'y		0 → 1	X/O			* 23	15
	A3743506	A3743506	Bin Ass'y		20 → 19		SAVIN NRG INFOTEC		18	15
		A3743508	Lower Bin Ass'y		0 → 1	X/O			* 23	15
	A3744561	A3744562	Stapler Guide		1 → 1	X/O			15	15
	A3743519	A3743520	Pressure Guide Mylar		20 → 19	X/O			16	15
		A3743522	Bin Support Film		1 → 1				* 24	15
		A3743514	Paper Support Film		0 → 19				* 25	15
		A3743526	Bin Spacer		0 → 2				* 26	15
									* New Index	

Rank: A : Replace with new parts immediately. B : Replace with new parts at time of repair. C : Replace with new parts at time of overhaul.

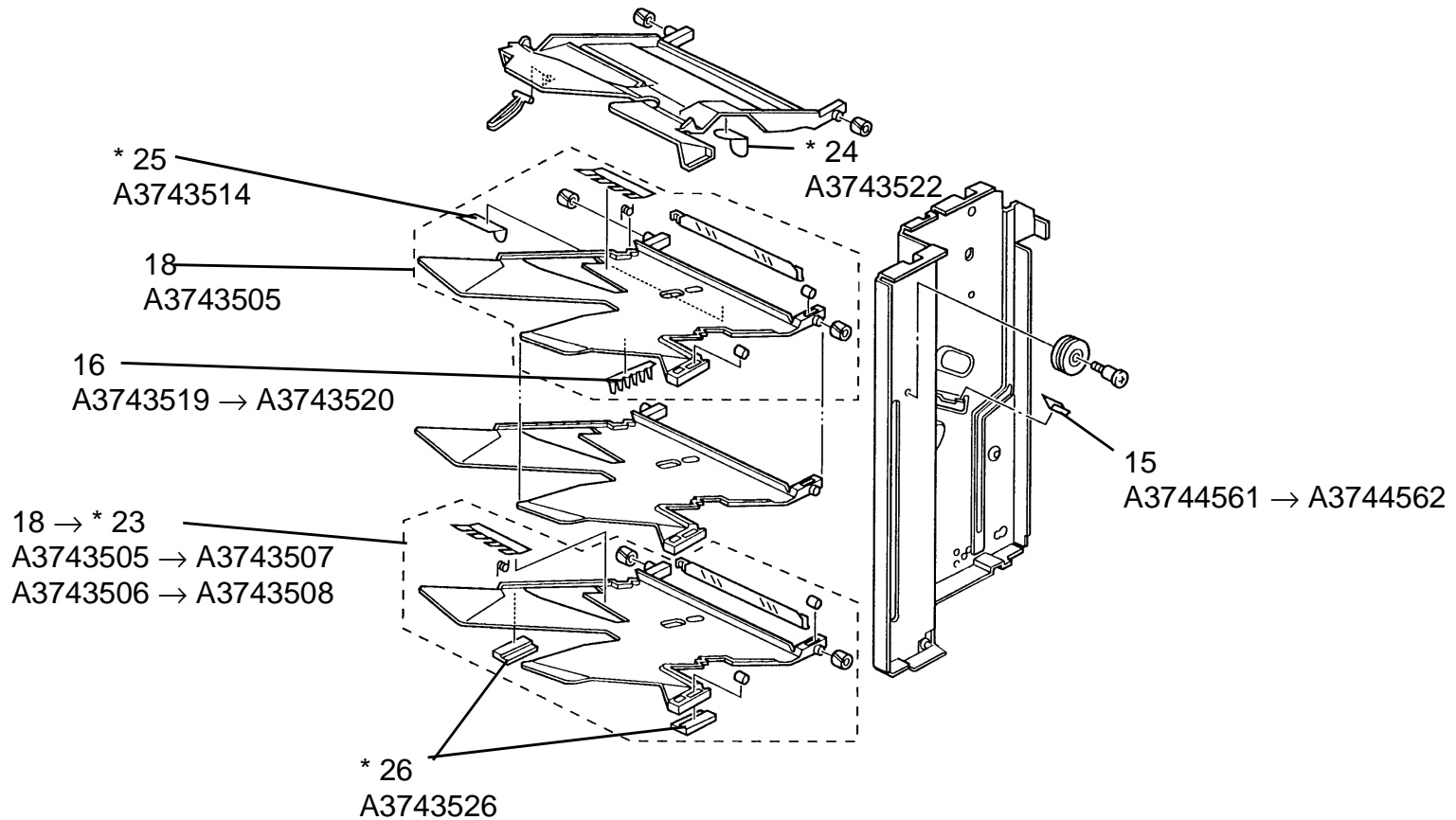
Interchangeability:

(1) When old and new parts are not mutually interchangeable, use additional parts or an assembly part as indicated in "Parts needed for replacement by new part" to install the new part.

(2) The mark to the left of the slash indicates whether the old part can be used in the new machine, and the mark to the right indicates whether the new part can be used in the old machine. x = Not interchangeable o = Interchangeable

DETAILS OF MODIFICATION

Please correct your parts catalog as shown.



S. Hamano, Assistant General Manager
Technical Support Department

MODEL NAME	V/Hz	DESTINATION	CODE	SERIAL NUMBER
Savin Sorter Stapler 3	115/60	USA, Canada	A374-15	/
Ricoh ST24	115/60 220, 240/50	Whole World	A374-17	
NRG SR3227	115/60 220, 240/50	Whole World	A374-25	
Infotec SS203	220, 240/50	Europe	A374-26	

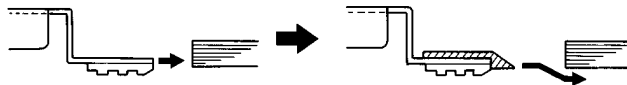
Model	Sorter Stapler for A7 / N440 / F400 / SP40	Volt/Hz	Date of Modification	Serial Number
Modified Article	Upper Gripper Arm / Drive Cam			
Reason for Modification	To ensure the function of the gripper.			

To ensure the function of the gripper, the shape of the following parts has been changed.

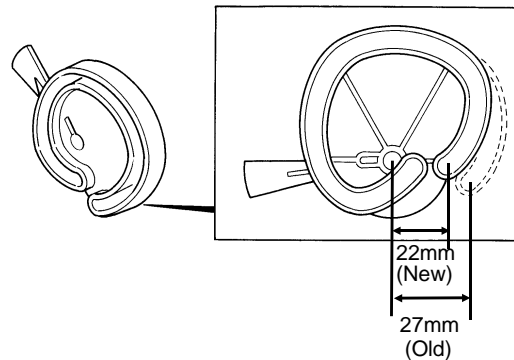
NOTE: When replacing one of these parts, please replace the other part at the same time. The old parts are no longer available.

Old P/N	New P/N	Description	Q'ty Used	Inter-change-ability	Parts Catalog	
					Index No.	Page
A3744651	A3744658	Upper Gripper Arm	1 → 1	O/X	14	9
A3744666	A3744667	Drive Cam	1 → 1	X/O	23	9

Upper Gripper Arm



Drive Cam



M. Iwasa, Manager
 Technical Support Department

MODEL NAME	V/Hz	DESTINATION	CODE	SERIAL NUMBER
Savin Sorter Stapler 3	115/60	USA, Canada	A374-15	4063110001
Ricoh ST24	115/60 220, 240/50	Whole World	A374-17	A3203110001
NRG SR3227	115/60 220, 240/50	Whole World	A374-25	4863110001
Infotec SS203	220, 240/50	Europe	A374-26	3D31130001

Model	Sorter Stapler for A7 / N440 / F400 / SP40	Volt/Hz	Date of Modification	Serial Number
Modified Article	Bin Ass'y			
Reason for Modification	Parts standardization			

Due to parts standardization, the bin ass'y and paper support film have been changed.

Old P/N	New P/N	Description	Q'ty Used	Inter-change-ability	Parts Catalog	
					Index No.	Page
A3743505	A3743605	Bin Ass'y (RICOH)	19 → 19	O/O	18	15
A3743506	A3743606	Bin Ass'y (NRG, SVN, INF)	19 → 19	O/O	18	15
A3743514	A3743513	Paper Support Film	19 → 19	O/O	25	15

M. Iwasa, Manager
 Technical Support Department

MODEL NAME	V/Hz	DESTINATION	CODE	SERIAL NUMBER
Savin Sorter Stapler 3	115/60	USA, Canada	A374-15	
Ricoh ST24	115/60 220, 240/50	Whole World	A374-17	
NRG SR3227	115/60 220, 240/50	Whole World	A374-25	
Infotec SS203	220, 240/50	Europe	A374-26	

Model	Sorter Stapler for A7 / N440 / F400 / SP40	Volt/Hz	Date of Modification	Serial Number
Modified Article	Bin Guide Mylars			
Reason for Modification	Parts standardization			

Due to parts standardization, the bin guide mylars have been changed.

Old P/N	New P/N	Description	Q'ty Used	Inter-change-ability	Parts Catalog	
					Index No.	Page
A3743515	A5543515	Bin Guide Mylar	20 → 20	O/O	19	15

M. Iwasa, Manager
 Technical Support Department

MODEL NAME	V/Hz	DESTINATION	CODE	SERIAL NUMBER
Savin Sorter Stapler 3	115/60	USA, Canada	A374-15	
Ricoh ST24	115/60 220, 240/50	Whole World	A374-17	
NRG SR3227	115/60 220, 240/50	Whole World	A374-25	
Infotec SS203	220, 240/50	Europe	A374-26	

Model	Sorter Stapler for N440 / F400 / SP40	Volt/Hz	Date of Modification	Serial Number
Modified Article	Main Control Board			
Reason for Modification	For CE Mark Compliance			

To meet the European CE mark standards, the main board has been changed as follows:

Old P/N	New P/N	Description	Q'ty Used	Inter-change-ability	Parts Catalog	
					Index No.	Page
A3745115	A3745120	Main Control Board	1 → 1	X/O (Europe)	20	11
				O/O (other than Europe)		

M. Iwasa, Manager
 Technical Support Department

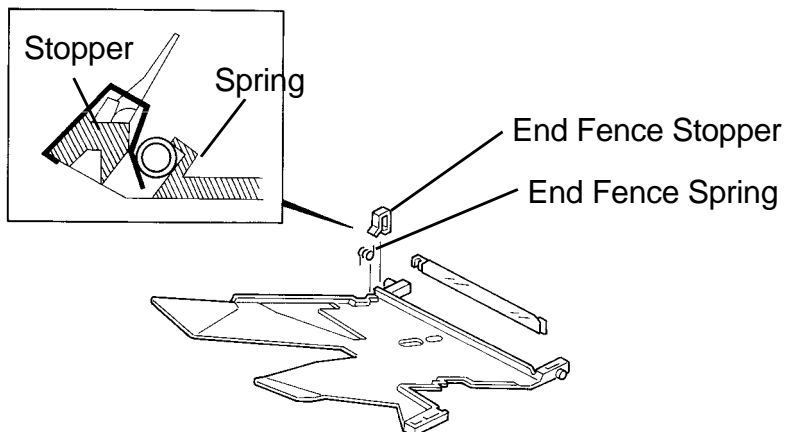
MODEL NAME	V/Hz	DESTINATION	CODE	SERIAL NUMBER
Savin Sorter Stapler 3	115/60	USA, Canada	A374-15	4065070001
Ricoh ST24	115/60 220, 240/50	Whole World	A374-17	A3205070001
NRG SR3227	115/60 220, 240/50	Whole World	A374-25	4865070001
Infotec SS203	220, 240/50	Europe	A374-26	3D30750001

Model	Sorter Stapler for A7 / N440 / F400 / SP40	Volt/Hz	Date of Modification	Serial Number
Modified Article	End Fence Stopper			
Reason for Modification	To prevent the end fence springs of the sorter bins from coming off			

The end fence stoppers have been added to each bin for the above reason.
The part numbers for the Bin Ass'y have also been changed as follows.

Old P/N	New P/N	Description	Q'ty Used	Inter-changeability	Parts Catalog	
					Index No.	Page
A374 3605	A374 3601	Bin Ass'y (RICOH)	19 → 19	X/O	18	15
A374 3507	A374 3607	Lower Bin Ass'y (RICOH)	1 → 1	X/O	23	15
A374 3606	A374 3602	Bin Ass'y (SVN, NRG, INF)	19 → 19	X/O	18	15
A374 3508	A374 3608	Lower Bin Ass'y (SVN, NRG, INF)	1 → 1	X/O	23	15
	A554 3512	End Fence Stopper	0 → 20		* 27	15

* New Index #



T. Inoue
T. Inoue, General Manager
1st Field Information Dept. QAC

MODEL NAME	V/Hz	DESTINATION	CODE	SERIAL NUMBER
Savin Sorter Stapler 3	115/60	USA, Canada	A374-15	406509XXXX
Ricoh ST24	115/60 220, 240/50	Whole World	A374-17	A320509XXXX
NRG SR3227	115/60 220, 240/50	Whole World	A374-25	486509XXXX
Infotec SS203	220, 240/50	Europe	A374-26	3D3095XXXX